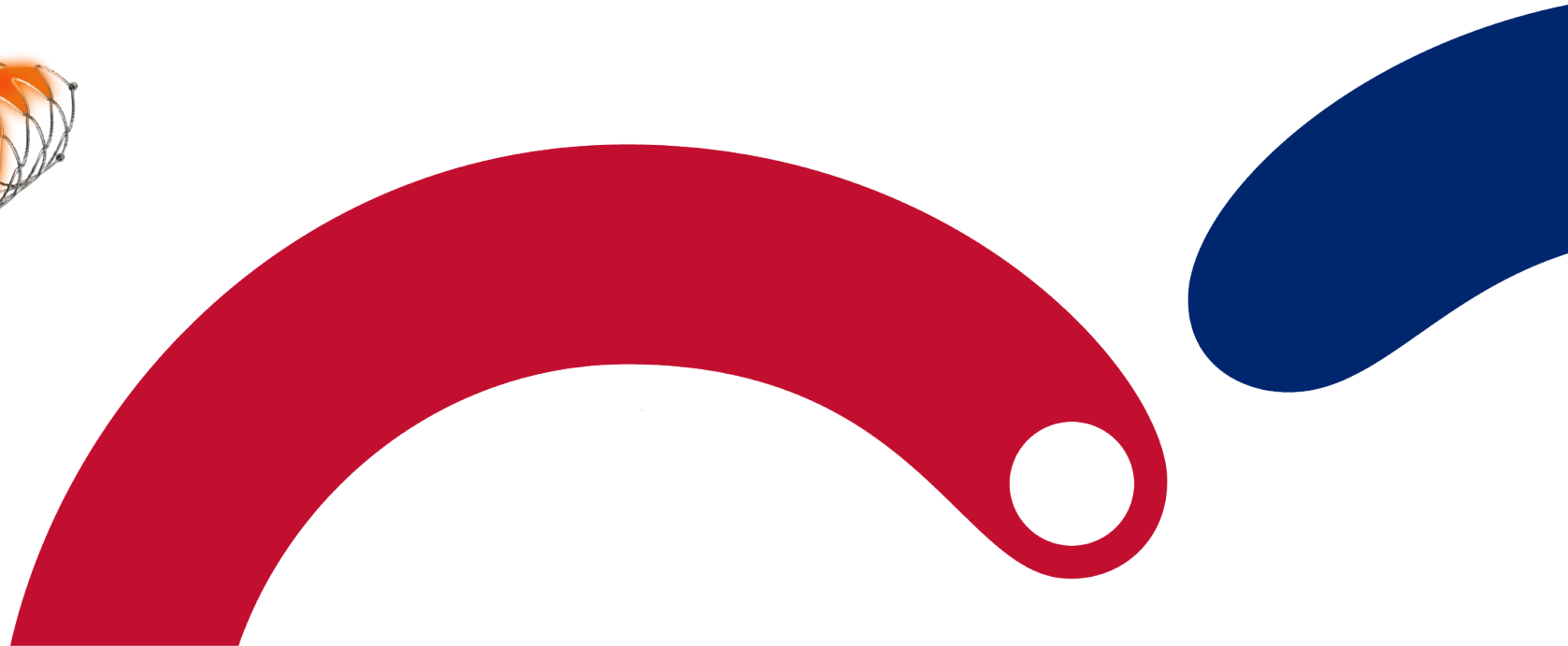
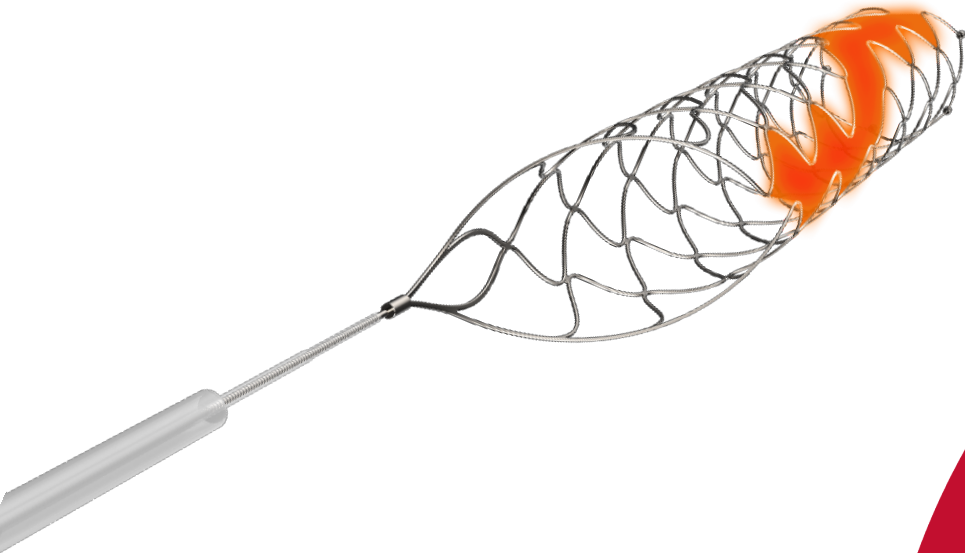


Case Report

A case of basilar artery occlusion treatment



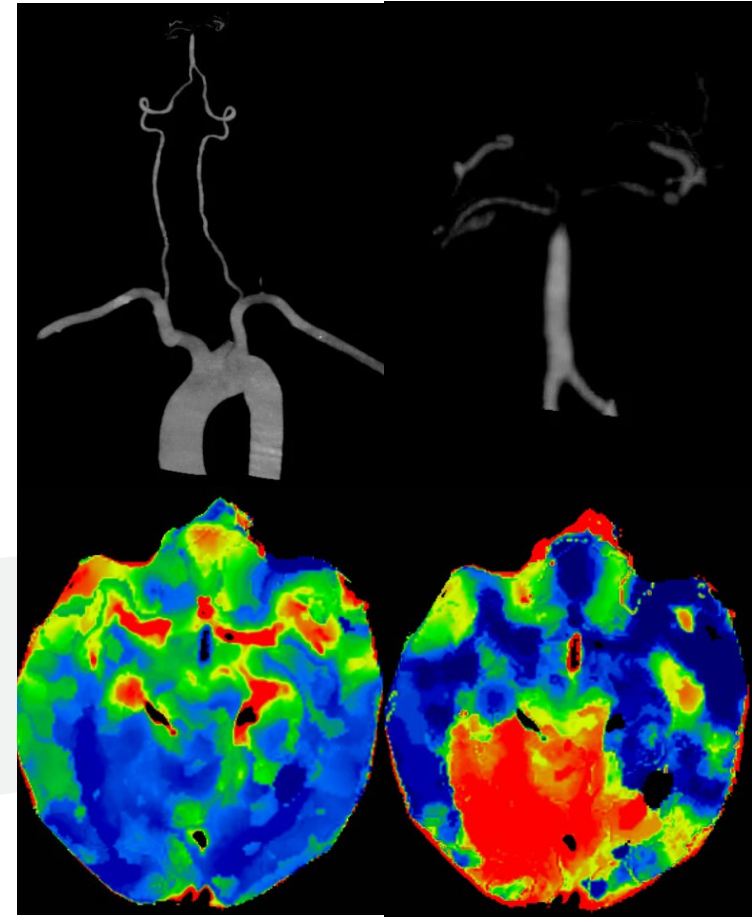
Patient information

- Male, 38 years old
- Sudden unconsciousness for 3 hours
- NIHSS score: 19
- pc-ASPECT score: 10

*Courtesy of:
Wang Yang, Beijing Chaoyang Hospital, Capital Medical University*

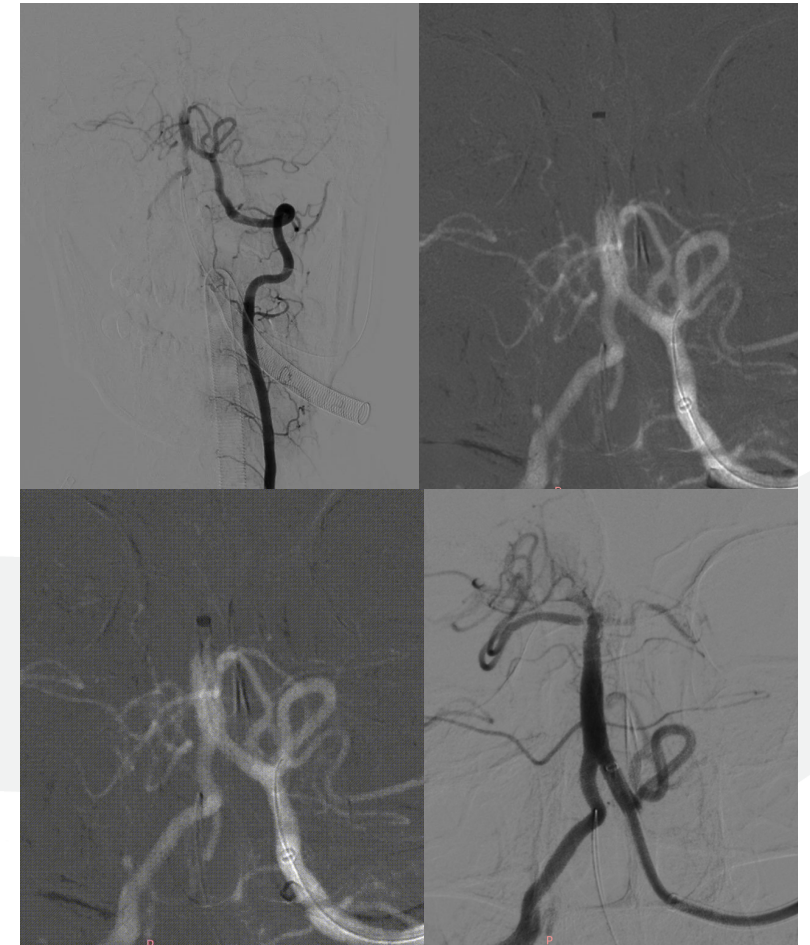
Preoperative Examination

- CTA showed occlusion of the basilar artery
- CTP indicated Posterior Circulatory ischemia
- Atrial fibrillation



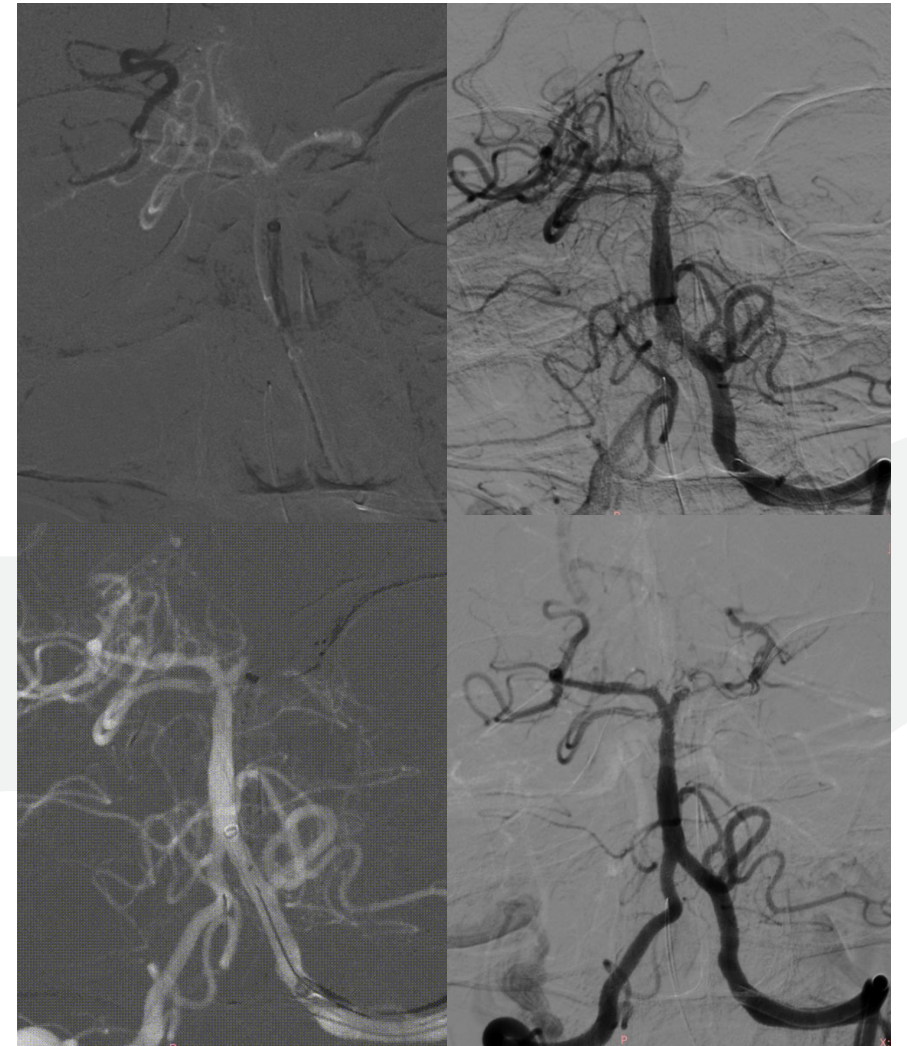
Procedure

- Left vertebral artery angiography
- 6F 125cm Cylone™ Aspiration Catheter in place
- 6F 125cm Cylone™ Aspiration Catheter started aspirating.
Negative aspiration was performed twice, and the basilar artery was partially recanalized at the top, and emboli were seen to escape toward the posterior cerebral arteries bilaterally



Procedure

- The microguidewire carried the microcatheter to the P3 segment of the right PCA, and the right PCA was recanalized once by a combination of pulling and thrombectomy
- The microguidewire carried the microcatheter to the P3 segment of the left PCA, and the left PCA was recanalized once by a combination of pulling and thrombectomy



Postoperative Angiography

- Left PCA P1 segment was white, observed for 20 min, improved and maintained good blood flow status

